

F

E

D

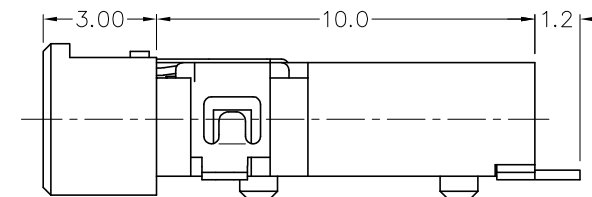
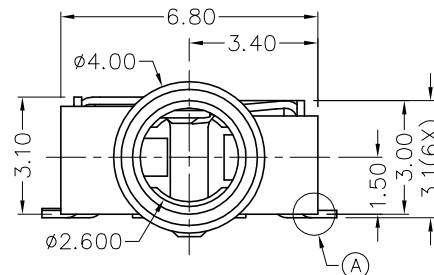
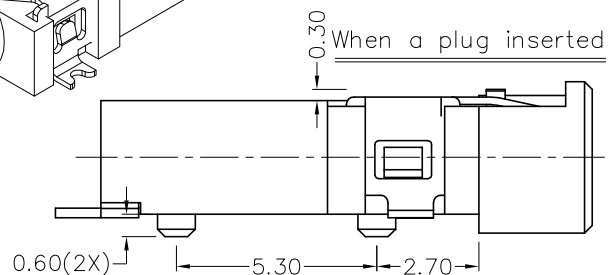
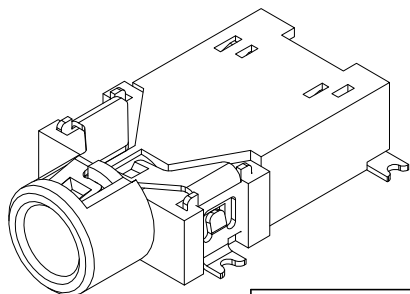
C

B

A

RoHS
Compliant

ZONE	SYMBOL	REVISION	APPROVAL	DATE
		ADDED INDICATION OF COPLANARITY	J.X.KUANG	25-12-2008

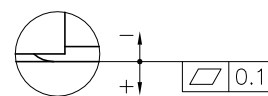
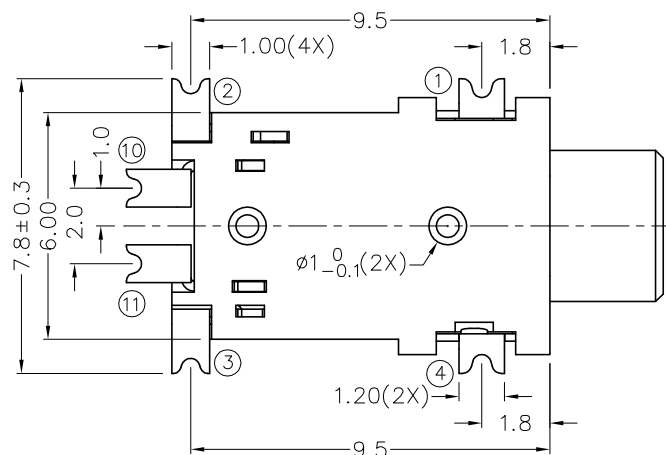


1

1

2

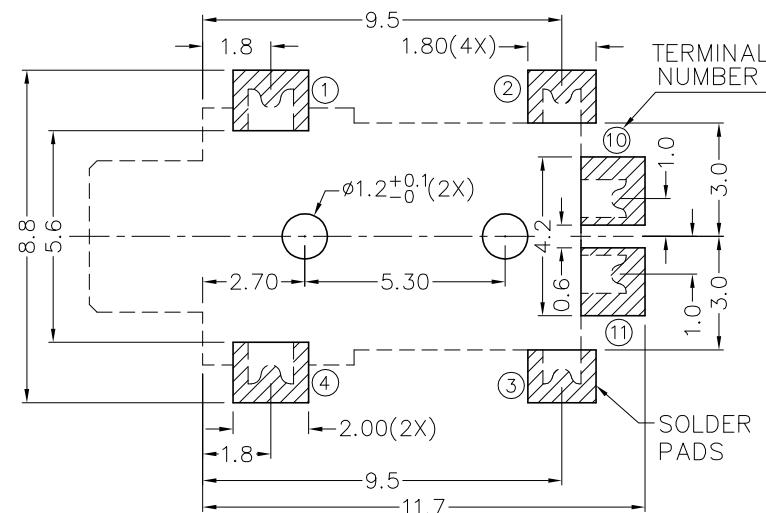
2



A DETAIL COPLANARITY

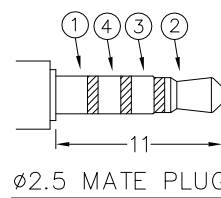
* MATERIAL

TERMINAL 1 : COPPER ALLOY
 TERMINAL 2 : COPPER ALLOY
 TERMINAL 3 : COPPER ALLOY
 TERMINAL 4 : COPPER ALLOY
 TERMINAL 10: BRASS
 TERMINAL 11: BRASS
 HOUSING : PA6T



RECOMMENDED
SOLDER PAD LAYOUT

MODEL NO.	TG-2956D	TG-2955AD	TG-2955BD	TG-2954D
SCHEMATIC				



3

3

4

4



CHAMPWAY 冠泰電子有限公司
CHAMPWAY ELECTRONICS CO., LTD.

PART NAME	2.5mm SMD STEREO JACK	TOLERANCE UNLESS	0.0±0.2	UNIT:	mm	DESIGN	G.P.YI	DATE	12-5-2006	SCALE	5:1
PART NO.	TG-295D	OTHERWISE SPECIFIED:	0.00±0.1 0.000±0.05				DRAWING	T.Y.LI	DATE	25-12-2008	MATERIAL
						CHECK		DATE		DWG. NO.	TZ\TG295D-PA6T/B
						APPROVAL		DATE		SHEET	

F

E

D

C

B

A