

F

E

D

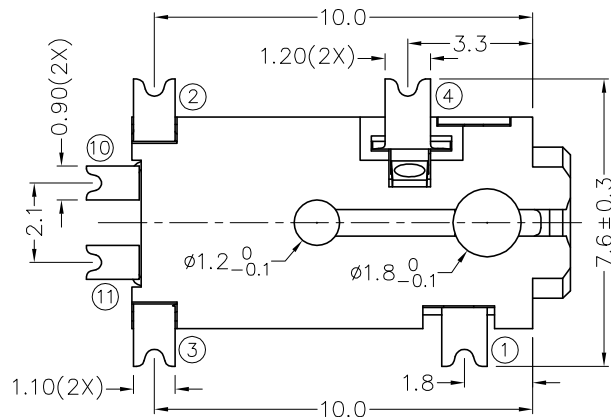
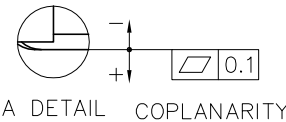
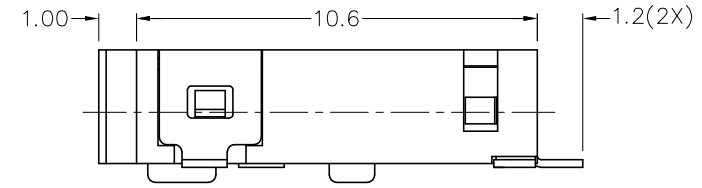
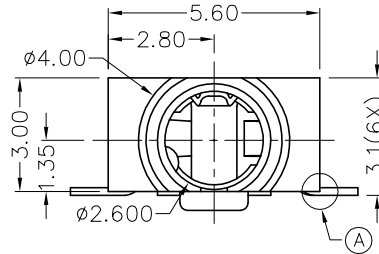
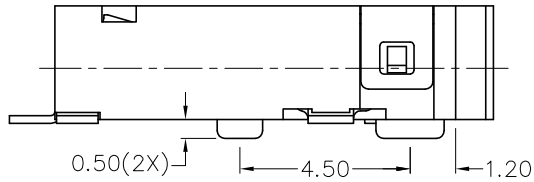
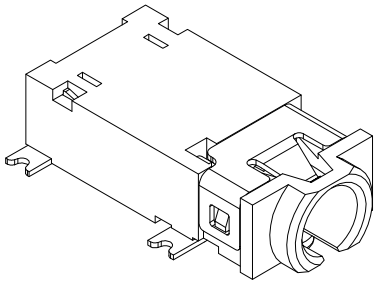
C

B

A

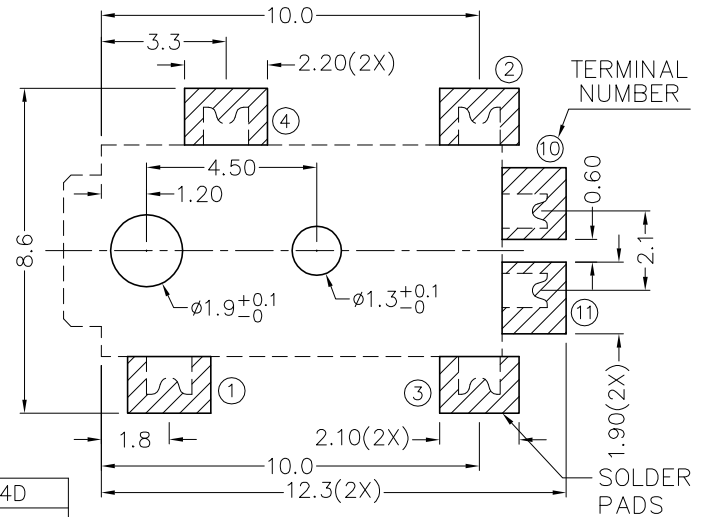
RoHS  
Compliant

ZONE	SYMBOL	REVISION	APPROVAL	DATE
		ADDED INDICATION OF COPLANARITY	J.X.KUANG	30-12-2008

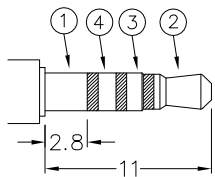


\* MATERIAL

- TERMINAL 1 : COPPER ALLOY
- TERMINAL 2 : BERYLLIUM COPPER
- TERMINAL 3 : BERYLLIUM COPPER
- TERMINAL 4 : COPPER ALLOY
- TERMINAL 10 : COPPER ALLOY
- TERMINAL 11 : COPPER ALLOY
- HOUSING : PA6T



RECOMMENDED  
SOLDER PAD LAYOUT



Ø2.5 SPECIAL MATE PLUG

MODEL NO.	TG-2976D	TG-2975AD	TG-2975BD	TG-2974D
SCHEMATIC				



**CHAMPWAY** 冠泰電子有限公司  
CHAMPWAY ELECTRONICS CO., LTD.

DESIGN	T.Y.LI	DATE	20-7-2006	SCALE	5:1
DRAWING	T.Y.LI	DATE	30-12-2008	MATERIAL	*
CHECK		DATE		DWG. NO.	TZ\TG297D-PA6T/B
APPROVAL		DATE		SHEET	

PART NAME	2.5mm SMD STEREO JACK	TOLERANCE UNLESS	0.0±0.2	UNIT:	
PART NO.	TG-297D	OTHERWISE SPECIFIED:	0.00±0.1 0.000±0.05	mm	

F

E

D

C

B

A