

F

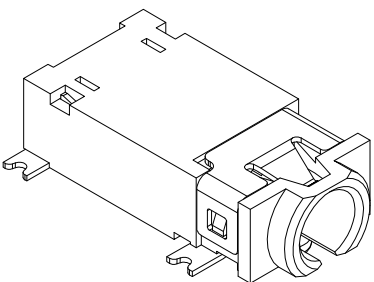
E

D

C

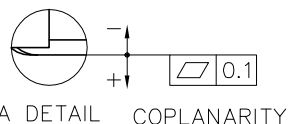
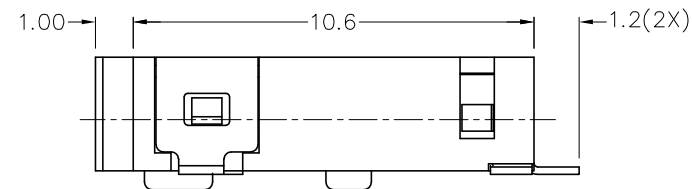
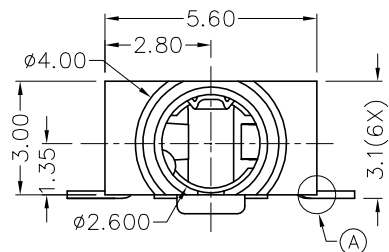
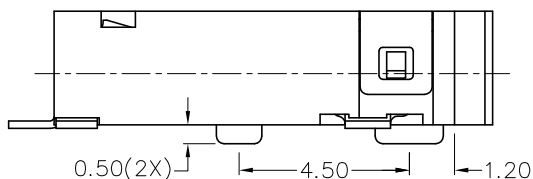
B

A



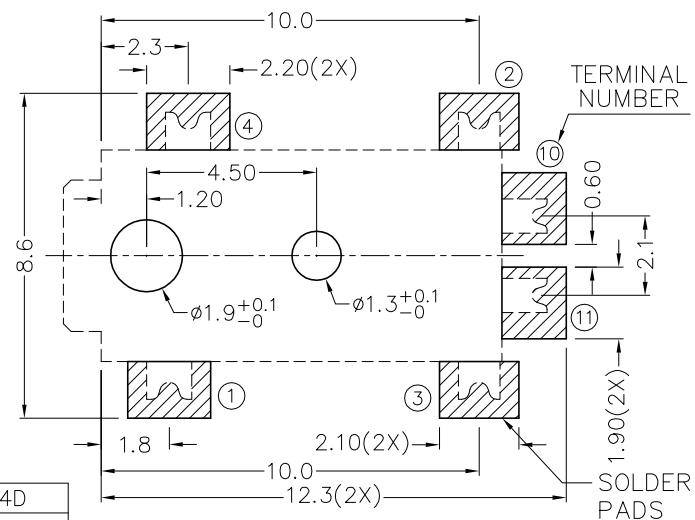
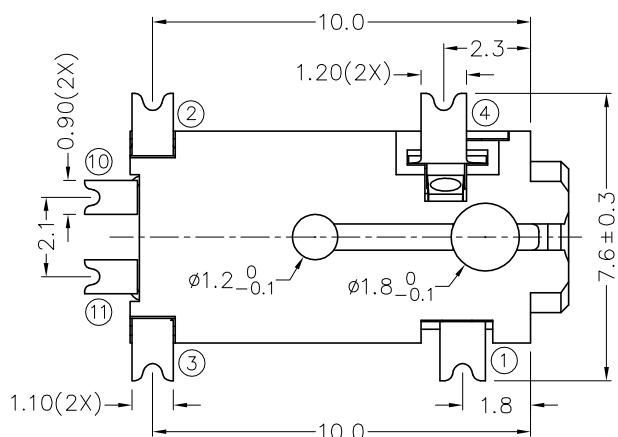
RoHS
Compliant

| ZONE | SYMBOL | REVISION | APPROVAL | DATE |
|------|--------|---------------------------------|-----------|----------|
| | | ADDED INDICATION OF COPLANARITY | J.X.KUANG | 2-1-2009 |
| | | | | |
| | | | | |

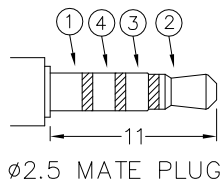


* MATERIAL

TERMINAL 1 : COPPER ALLOY
 TERMINAL 2 : BERYLLIUM COPPER
 TERMINAL 3 : BERYLLIUM COPPER
 TERMINAL 4 : COPPER ALLOY
 TERMINAL 10 : COPPER ALLOY
 TERMINAL 11 : COPPER ALLOY
 HOUSING : PA6T



RECOMMENDED
SOLDER PAD LAYOUT



| MODEL NO. | TG-4006D | TG-4005AD | TG-4005BD | TG-4004D |
|-----------|----------|-----------|-----------|----------|
| SCHEMATIC | | | | |



CHAMPWAY 冠泰電子有限公司
CHAMPWAY ELECTRONICS CO., LTD.

| | | | | | |
|----------|--------|------|-----------|----------|------------------|
| DESIGN | T.Y.LI | DATE | 18-1-2007 | SCALE | 5:1 |
| DRAWING | T.Y.LI | DATE | 2-1-2009 | MATERIAL | * |
| CHECK | | DATE | | DWG. NO. | TZ\TG400D-PA6T/B |
| APPROVAL | | DATE | | SHEET | |

| | | | | | |
|-----------|-----------------------|----------------------|------------------------|-------|----|
| PART NAME | 2.5mm SMD STEREO JACK | TOLERANCE UNLESS | 0.0±0.2 | UNIT: | mm |
| PART NO. | TG-400D | OTHERWISE SPECIFIED: | 0.00±0.1 0.000±0.05 | | |

F

E

D

C

B

A