

F

E

D

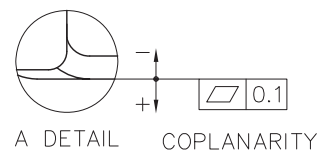
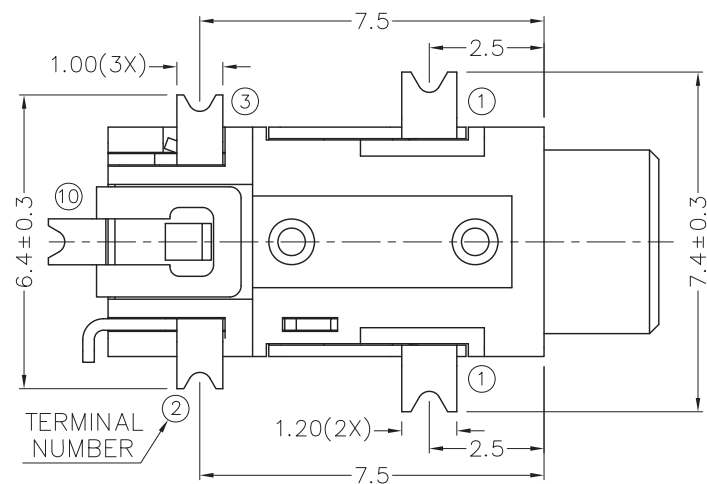
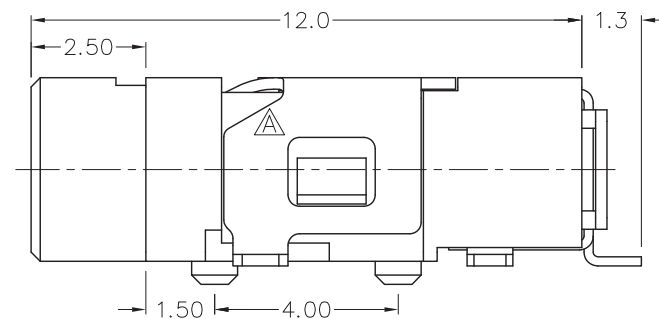
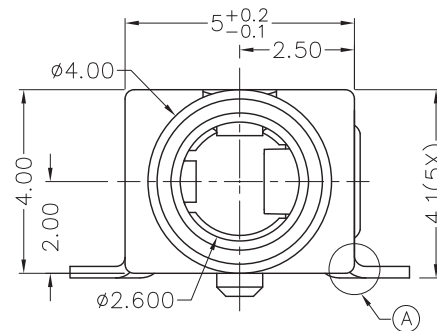
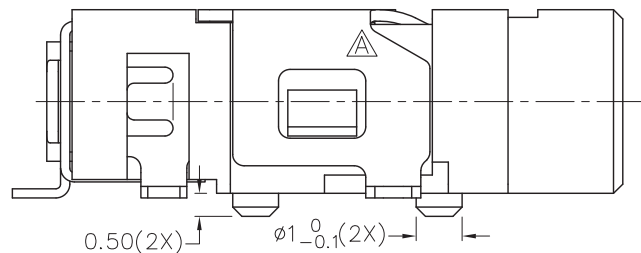
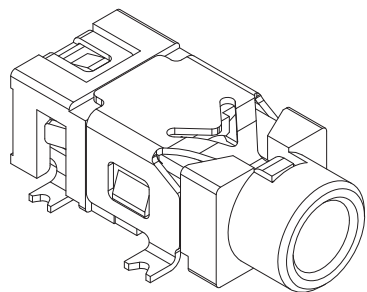
C

B

A

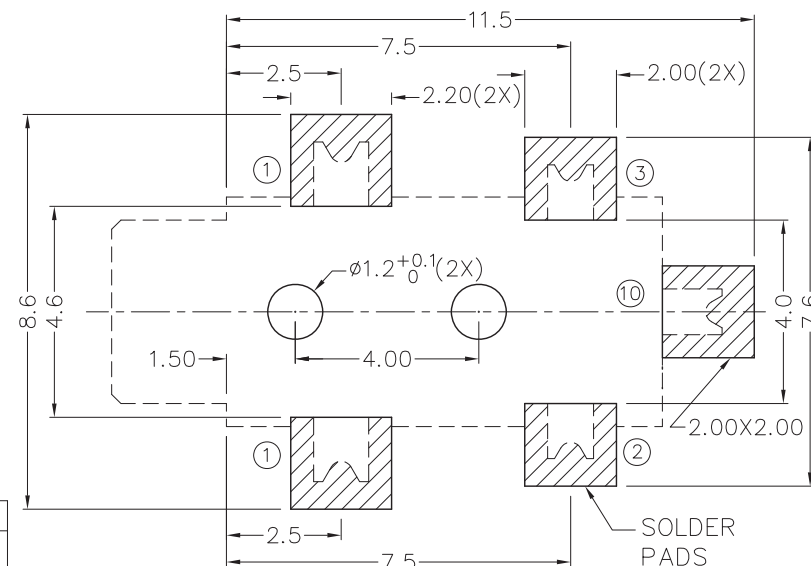
RoHS
Compliant

ZONE	SYMBOL	REVISION	APPROVAL	DATE
	△	TERMINAL 1 ADD CHAMFER	J.X.KUANG	25-9-2010

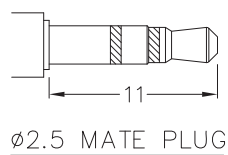


* MATERIAL

TERMINAL 1 : COPPER ALLOY
TERMINAL 2 : COPPER ALLOY
TERMINAL 3 : COPPER ALLOY
TERMINAL 10: COPPER ALLOY
HOUSING : PA6T



RECOMMENDED
SOLDER PAD LAYOUT
(TOP VIEW)



MODEL NO.	TG-2804D	TG-2803D	TG-2803AD	TG-2802D
SCHEMATIC				



CHAMPWAY 冠泰電子有限公司
CHAMPWAY ELECTRONICS CO., LTD.

PART NAME	2.5mm SMD STEREO JACK	TOLERANCE UNLESS	0.0±0.2 0.00±0.1	UNIT:	mm
PART NO.	TG-280D	OTHERWISE SPECIFIED:	0.000±0.05		

DESIGN	J.X.KUANG	DATE	2-10-2003	SCALE	6:1
DRAWING	T.Y.LI	DATE	25-9-2010	MATERIAL	*
CHECK		DATE		DWG. NO.	TZ\TG280D-PA6T/F
APPROVAL		DATE		SHEET	A

F

E

D

C

B

A