

F

E

D

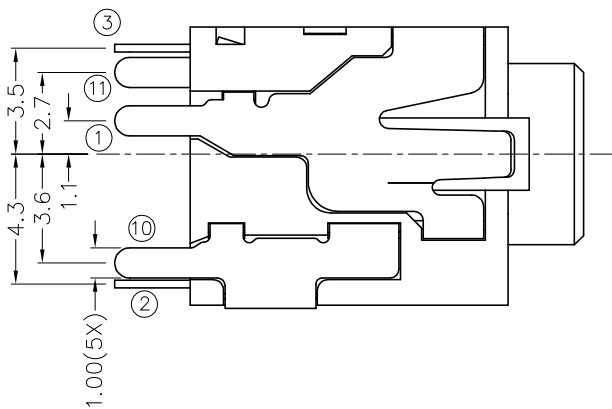
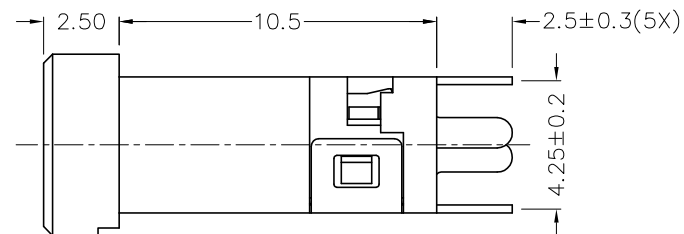
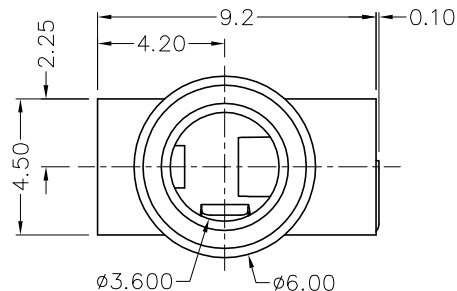
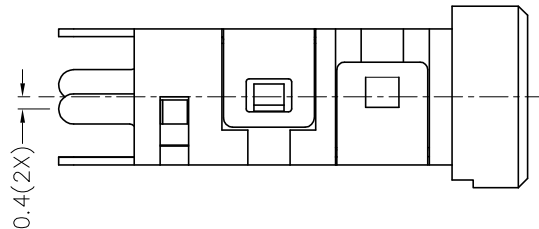
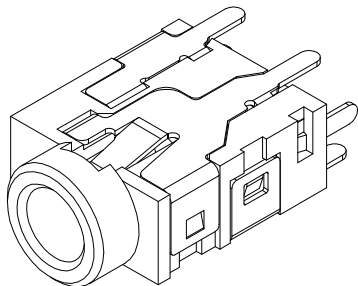
C

B

A

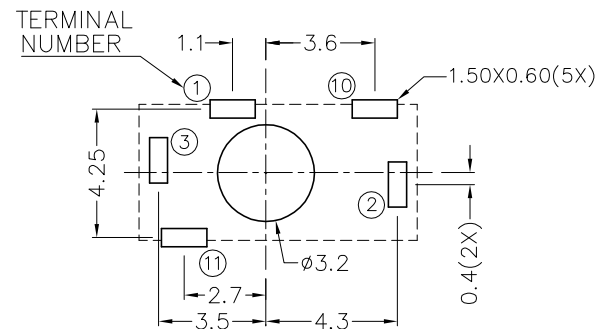
ZONE	SYMBOL	REVISION	APPROVAL	DATE

RoHS  
Compliant

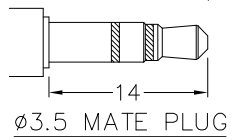


\* MATERIAL

- TERMINAL 1 : COPPER ALLOY
- TERMINAL 2 : COPPER ALLOY
- TERMINAL 3 : COPPER ALLOY
- TERMINAL 10 : BRASS
- TERMINAL 11 : BRASS
- HOUSING : PBT



PCB LAYOUT  
(BOTTOM VIEW)



MODEL NO.	TSH-3935	TSH-3934A	TSH-3934B	TSH-3933
SCHEMATIC				



**CHAMPWAY** 冠泰電子有限公司  
CHAMPWAY ELECTRONICS CO., LTD.

DESIGN	G.P.YI	DATE	16-8-2006	SCALE	4:1
DRAWING	G.P.YI	DATE	16-8-2006	MATERIAL	*
CHECK		DATE		DWG. NO.	TZ\SH393-PBT/A
APPROVAL		DATE		SHEET	

PART NAME	3.5mm STEREO JACK	TOLERANCE UNLESS	0.0±0.2	UNIT:
PART NO.	TSH-393	OTHERWISE SPECIFIED:	0.00±0.1 0.000±0.05	

F

E

D

C

B

A

DCF-04/A