

F

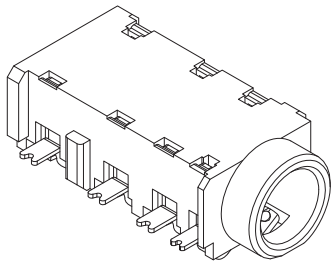
E

D

C

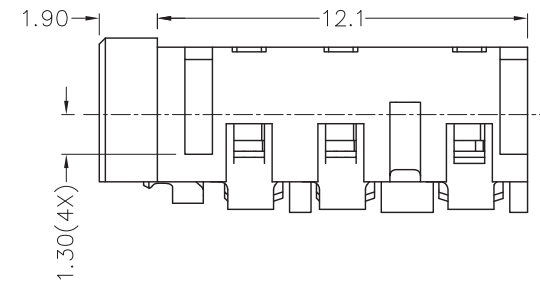
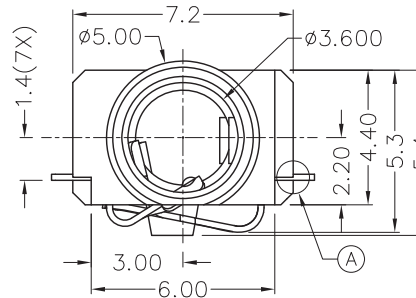
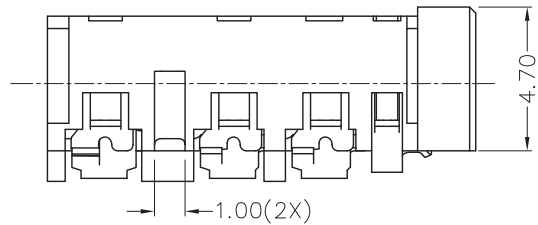
B

A



RoHS  
Compliant

ZONE	SYMBOL	REVISION	APPROVAL	DATE
		UPDATE THE DWG.	J.X.KUANG	8-8-2012



1

1

2

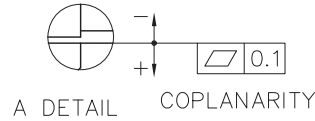
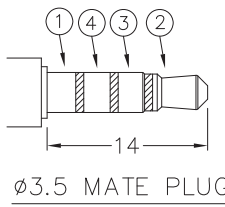
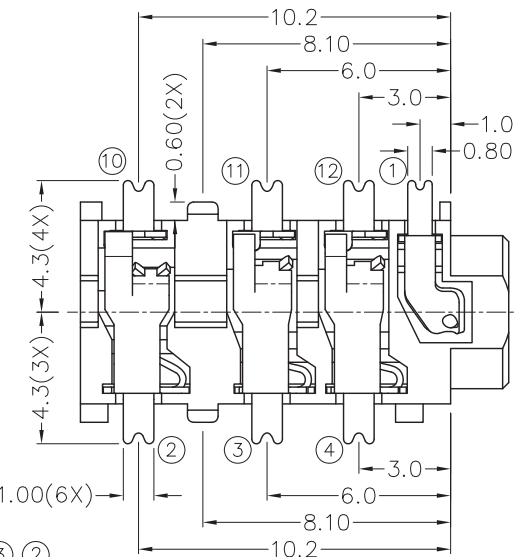
2

3

3

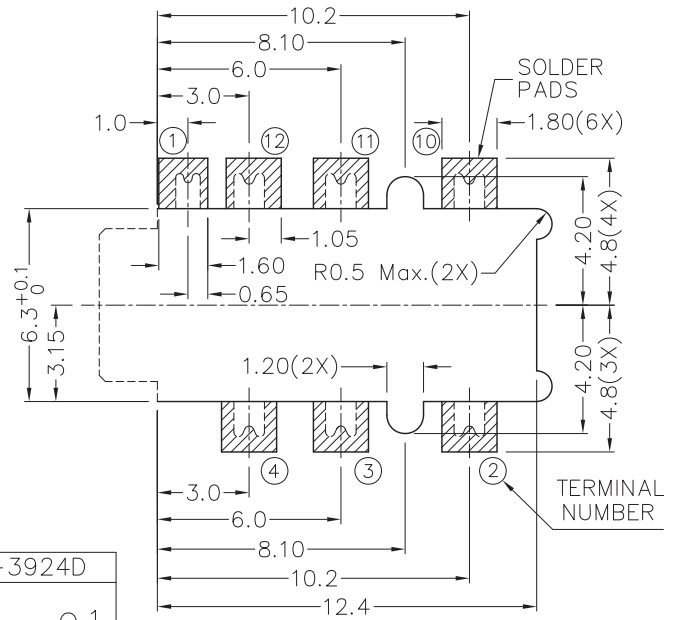
4

4



\* MATERIAL

TERMINAL 1 : COPPER ALLOY  
 TERMINAL 2 : COPPER ALLOY  
 TERMINAL 3 : COPPER ALLOY  
 TERMINAL 4 : COPPER ALLOY  
 TERMINAL 10: COPPER ALLOY  
 TERMINAL 11: COPPER ALLOY  
 TERMINAL 12: COPPER ALLOY  
 HOUSING : PA6T



MODEL NO.	TSH-3927D	TSH-3926AD	TSH-3925AD	TSH-3925BD	TSH-3924D
SCHEMATIC					

**CHAMPWAY** 冠泰电子有限公司  
 CHAMPWAY ELECTRONICS CO., LTD.

PART NAME	3.5mm SMD STEREO JACK	TOLERANCE UNLESS	0.0±0.2	UNIT:	
PART NO.	TSH-392D	OTHERWISE SPECIFIED:	0.00±0.1 0.000±0.05	mm	

DESIGN	G.P.YI	DATE	1-7-2006	SCALE	4:1
DRAWING	T.Y.LI	DATE	8-8-2012	MATERIAL	*
CHECK		DATE		DWG. NO.	TZ\SH392D-PA6T/C
APPROVAL		DATE		SHEET	

F

E

D

C

B

A