

F

E

D

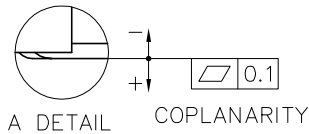
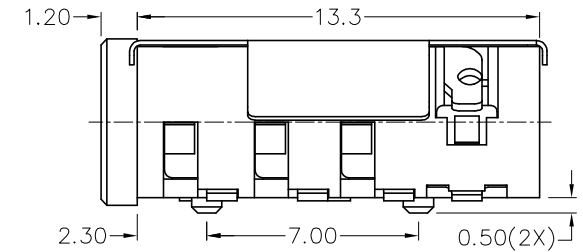
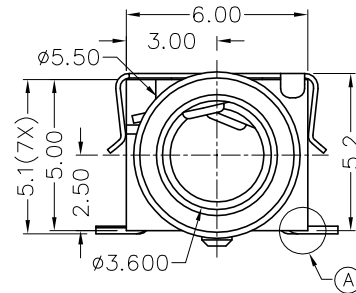
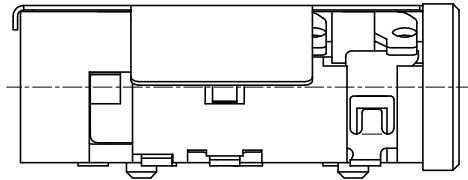
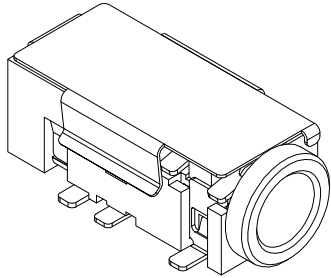
C

B

A

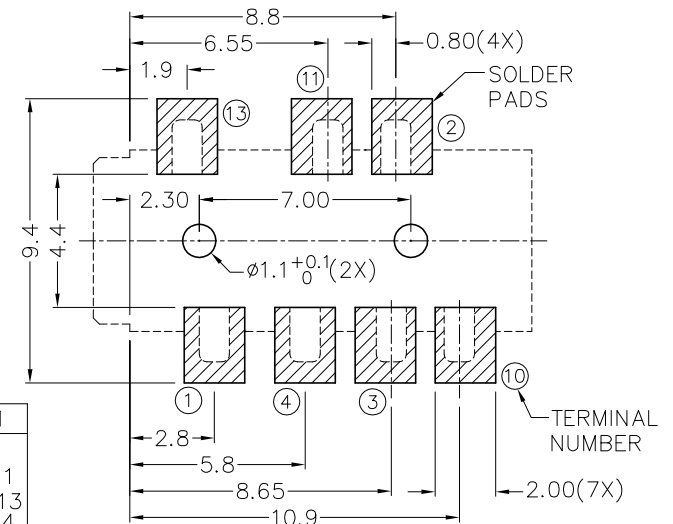
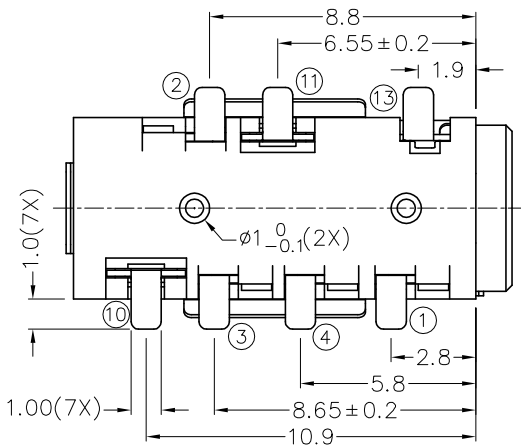
ZONE	SYMBOL	REVISION	APPROVAL	DATE
		ADDED INDICATION OF COPLANARITY	J.X.KUANG	16-12-2008

RoHS
Compliant

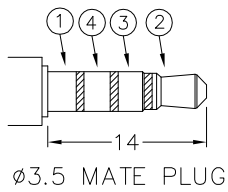


* MATERIAL

TERMINAL 1 : COPPER ALLOY
 TERMINAL 2 : COPPER ALLOY
 TERMINAL 3 : COPPER ALLOY
 TERMINAL 4 : COPPER ALLOY
 TERMINAL 10 : BRASS
 TERMINAL 11 : BRASS
 TERMINAL 13 : COPPER ALLOY
 SHIELD : STAINLESS STEEL
 HOUSING : PA6T



RECOMMENDED
SOLDER PAD LAYOUT



MODEL NO.	TSH-5017DS1	TSH-5016ADS1	TSH-5016BDS1	TSH-5015DS1
SCHEMATIC				



CHAMPWAY 冠泰電子有限公司
CHAMPWAY ELECTRONICS CO., LTD.

PART NAME 3.5mm SMD STEREO JACK W/HANDING SHIELD
 PART NO. TSH-501DS1

TOLERANCE UNLESS 0.0±0.2
 OTHERWISE SPECIFIED: 0.00±0.1
 0.000±0.05

UNIT: mm

CHECK
 APPROVAL

DATE

DATE

DWG. NO. TZ\SH501DS1-PA6T/B

SHEET

F

E

D

C

B

A