

F

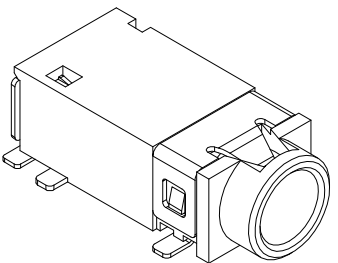
E

D

C

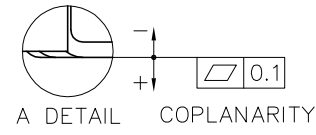
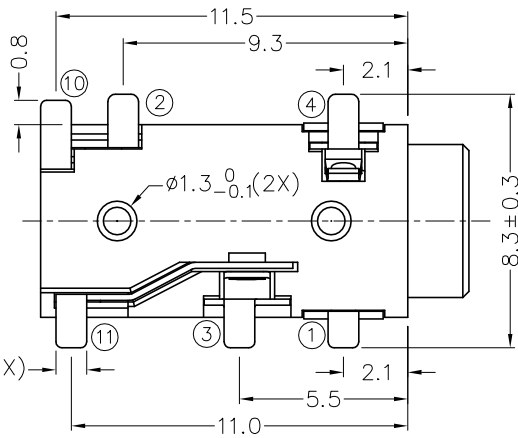
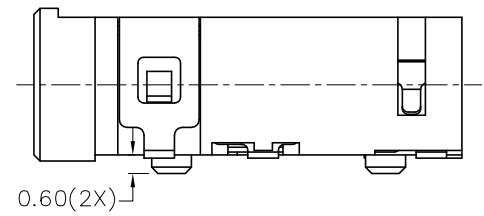
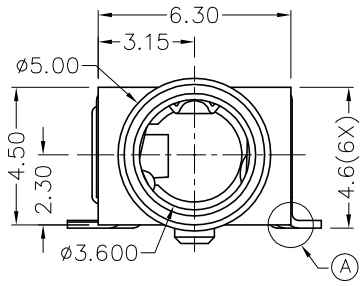
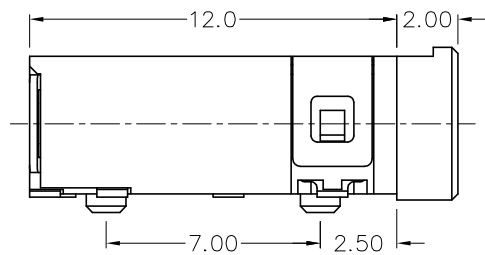
B

A

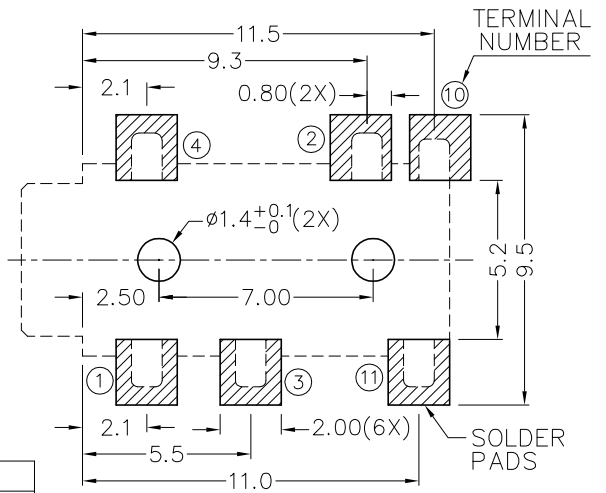


RoHS
Compliant

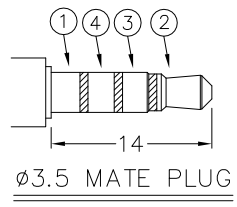
ZONE	SYMBOL	REVISION	APPROVAL	DATE
		ADDED INDICATION OF COPLANARITY	J.X.KUANG	28-11-2008



* MATERIAL
 TERMINAL 1 : COPPER ALLOY
 TERMINAL 2 : COPPER ALLOY
 TERMINAL 3 : COPPER ALLOY
 TERMINAL 4 : COPPER ALLOY
 TERMINAL 10 : BRASS
 TERMINAL 11 : BRASS
 HOUSING : PA6T



RECOMMENDED
SOLDER PAD LAYOUT



MODEL NO.	TSH-3896D	TSH-3895AD	TSH-3895BD	TSH-3894D
SCHEMATIC				

CHAMPWAY 冠泰電子有限公司
CHAMPWAY ELECTRONICS CO., LTD.

DESIGN	T.Y.LI	DATE	17-10-2005	SCALE	4:1
DRAWING	T.Y.LI	DATE	28-11-2008	MATERIAL	*
CHECK		DATE		DWG. NO.	TZ\SH389D-PA6T/D
APPROVAL		DATE		SHEET	A

PART NAME	3.5mm SMD STEREO JACK	TOLERANCE UNLESS	0.0±0.2	UNIT:	
PART NO.	TSH-389D	OTHERWISE SPECIFIED:	0.00±0.05	mm	

F

E

D

C

B

A