

F

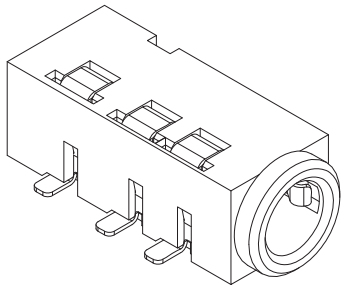
E

D

C

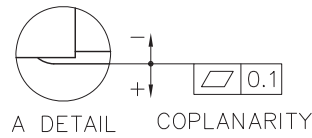
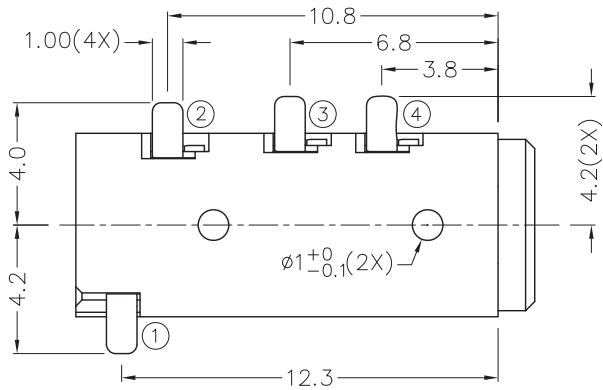
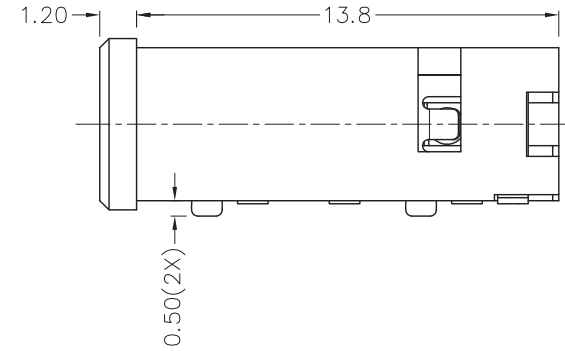
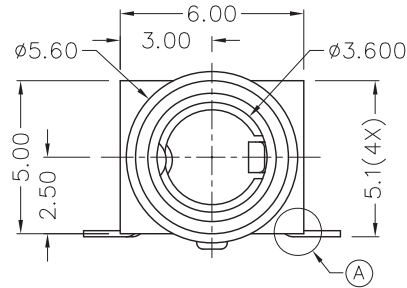
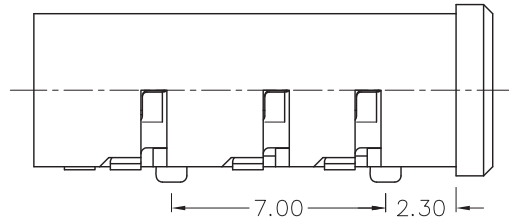
B

A



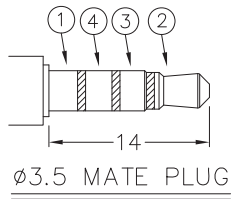
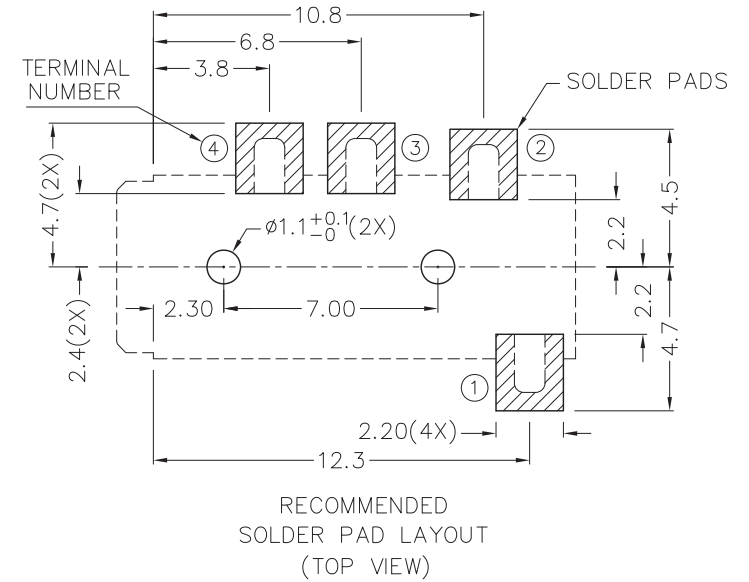
RoHS
Compliant

ZONE	SYMBOL	REVISION	APPROVAL	DATE
		UPDATE THE DWG.	J.X.KUANG	20-7-2011



* MATERIAL

- TERMINAL 1 : COPPER ALLOY
- TERMINAL 2 : COPPER ALLOY
- TERMINAL 3 : COPPER ALLOY
- TERMINAL 4 : COPPER ALLOY
- HOUSING : PA6T



MODEL NO.	TSH-3714	TSH-3713	TSH-3713B
SCHEMATIC			

CHAMPWAY 冠泰電子有限公司
CHAMPWAY ELECTRONICS CO., LTD.

PART NAME 3.5mm SMD STEREO JACK
PART NO. TSH-371

TOLERANCE UNLESS 0.0±0.2
0.00±0.1
OTHERWISE SPECIFIED: 0.000±0.05

UNIT: mm

DESIGN	J.X.KUANG	DATE	21-7-2004	SCALE	4:1
DRAWING	T.Y.LI	DATE	20-7-2011	MATERIAL	*
CHECK		DATE		DWG. NO.	TZ\SH371-PA6T/F
APPROVAL		DATE		SHEET	

F

E

D

C

B

A