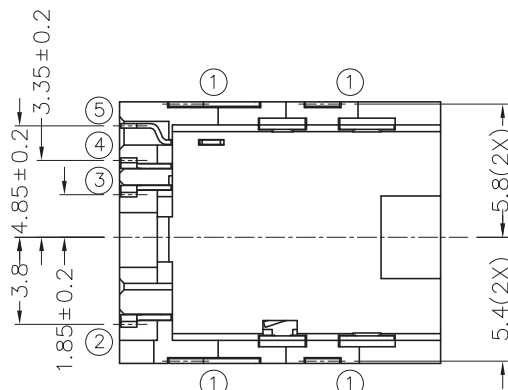
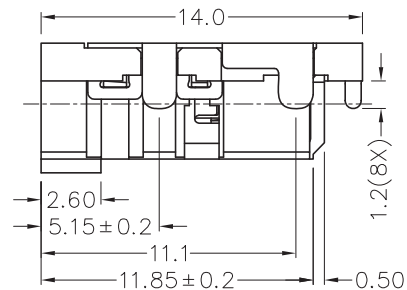
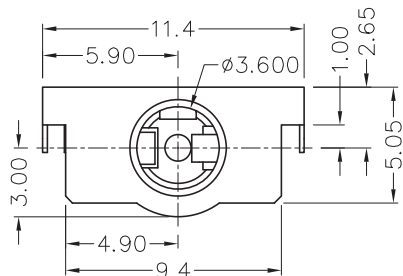
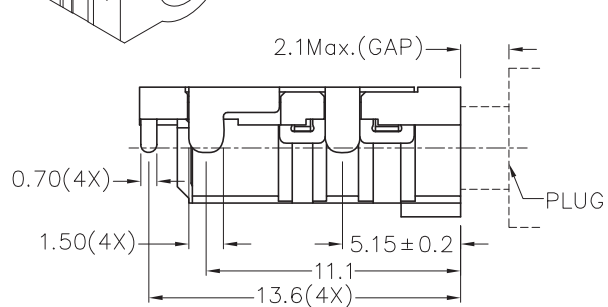


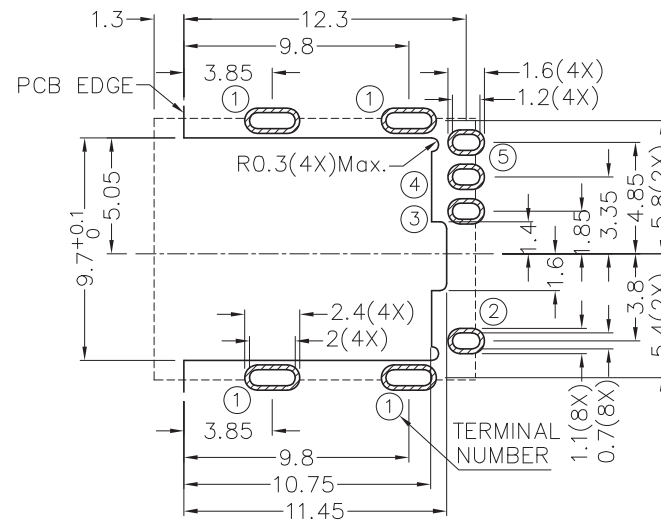
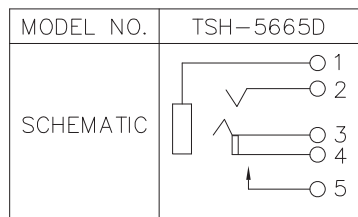
RoHS
Compliant

ZONE	SYMBOL	REVISION	APPROVAL	DATE

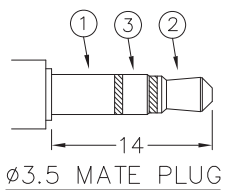


* MATERIAL

- TERMINAL 1 : COPPER ALLOY
- TERMINAL 2 : COPPER ALLOY
- TERMINAL 3 : COPPER ALLOY
- TERMINAL 4 : COPPER ALLOY
- TERMINAL 5 : COPPER ALLOY
- HOUSING : PA10T



RECOMMENDED PCB LAYOUT
TOLERANCE: ±0.05
(TOP VIEW)



CHAMPWAY 冠泰电子有限公司
CHAMPWAY ELECTRONICS CO., LTD.

PART NAME 3.5mm SMD STEREO JACK
PART NO. TSH-566D

TOLERANCE UNLESS 0.0±0.2
0.00±0.1
OTHERWISE SPECIFIED: 0.000±0.05

UNIT: mm

DESIGN	G.P.YI	DATE	18-4-2013	SCALE	3:1
DRAWING	G.P.YI	DATE	7-5-2013	MATERIAL	*
CHECK		DATE		DWG. NO.	TZ\SH566D-PA10T/A
APPROVAL		DATE		SHEET	