

F

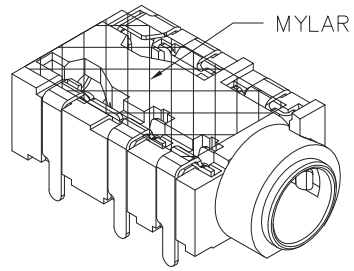
E

D

C

B

A

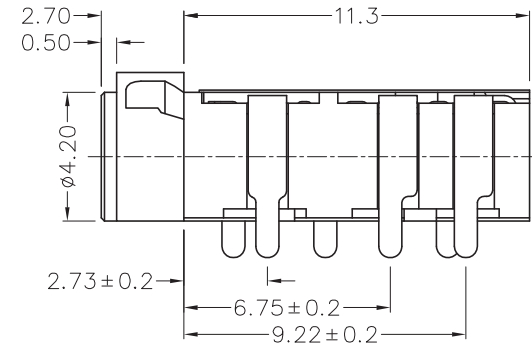
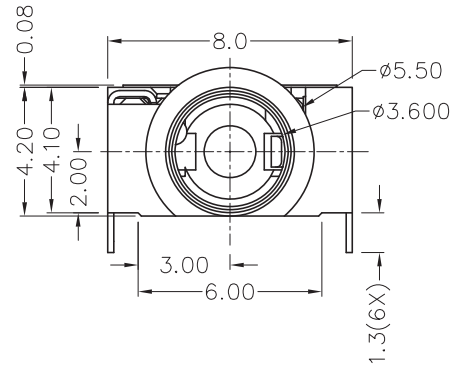
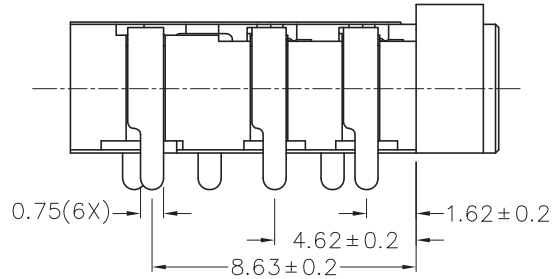


RoHS
Compliant

| ZONE | SYMBOL | REVISION | APPROVAL | DATE |
|------|--------|----------|----------|------|
| | | | | |
| | | | | |
| | | | | |

1

1

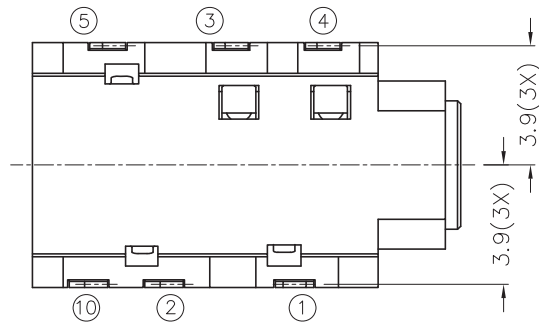


2

2

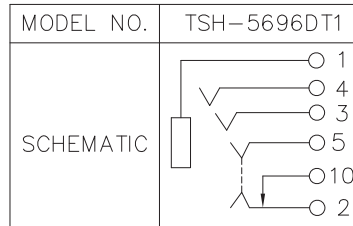
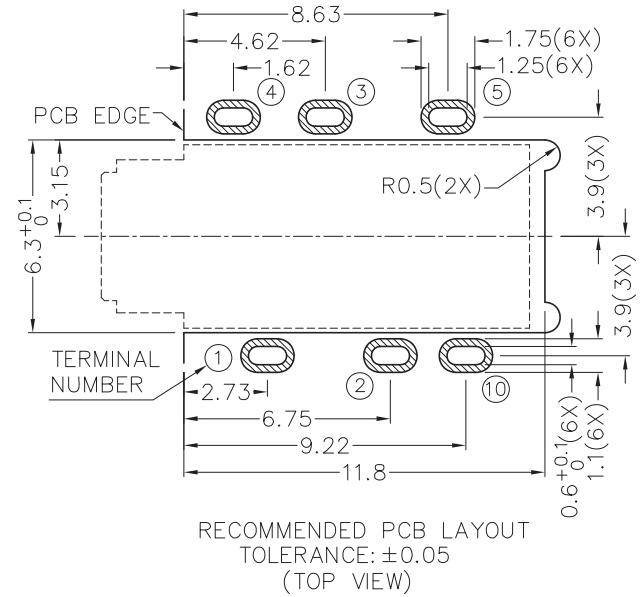
3

3



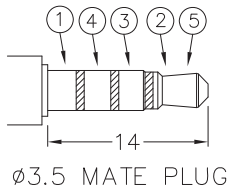
* MATERIAL

- TERMINAL 1 : COPPER ALLOY
- TERMINAL 2 : COPPER ALLOY
- TERMINAL 3 : COPPER ALLOY
- TERMINAL 4 : COPPER ALLOY
- TERMINAL 5 : COPPER ALLOY
- TERMINAL 10: COPPER ALLOY
- MYLAR : POLYIMIDE
- HOUSING : PA10T



4

4



CHAMPWAY 冠泰電子有限公司
CHAMPWAY ELECTRONICS CO., LTD.

| | | | | | |
|----------|---------|------|-----------|----------|---------------------|
| DESIGN | H.L.TAN | DATE | 26-3-2013 | SCALE | 4:1 |
| DRAWING | H.L.TAN | DATE | 18-5-2013 | MATERIAL | * |
| CHECK | | DATE | | DWG. NO. | TZ\SH569DT1-PA10T/A |
| APPROVAL | | DATE | | SHEET | |

| | | | | | |
|-----------|-----------------------|----------------------|------------------------|-------|----|
| PART NAME | 3.5mm SMD STEREO JACK | TOLERANCE UNLESS | 0.0±0.2 | UNIT: | mm |
| PART NO. | TSH-569DT1 | OTHERWISE SPECIFIED: | 0.00±0.1 0.000±0.05 | | |

F

E

D

C

B

A