

F

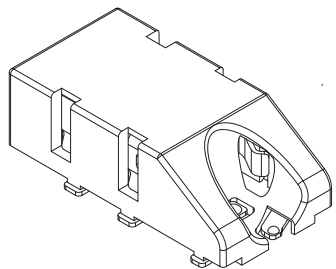
E

D

C

B

A



RoHS
Compliant

ZONE	SYMBOL	REVISION	APPROVAL	DATE

1

1

2

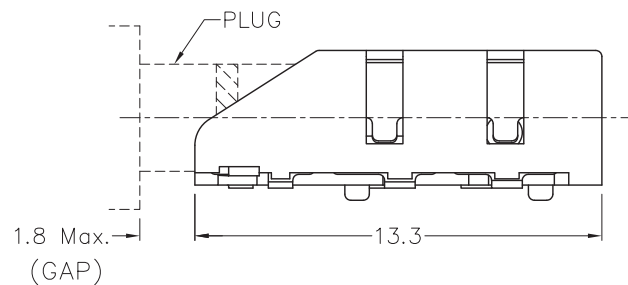
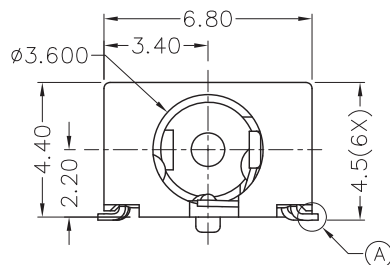
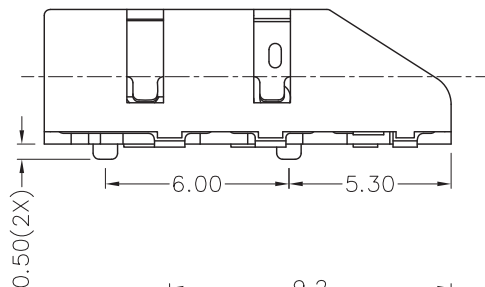
2

3

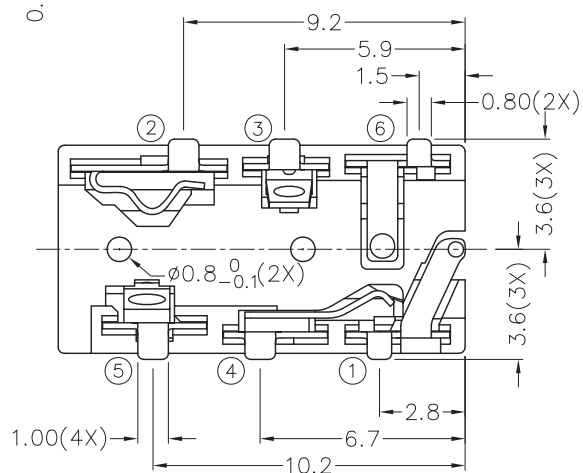
3

4

4

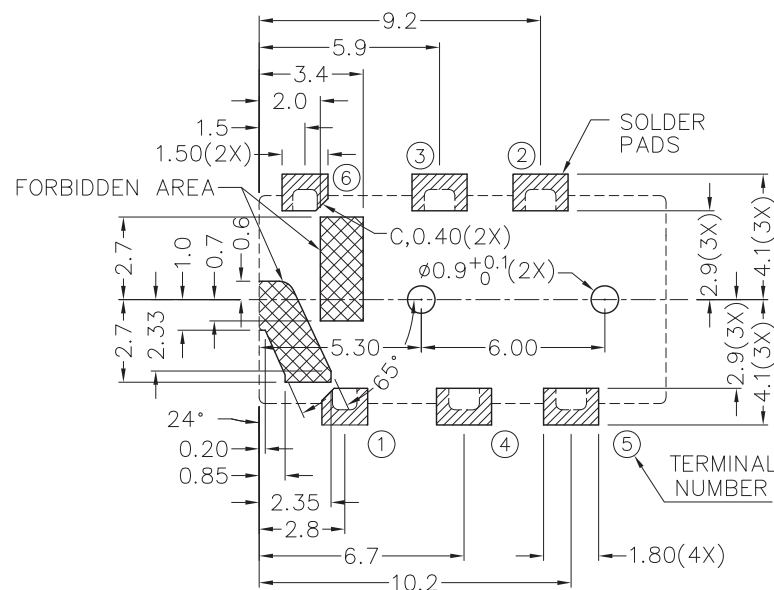


A DETAIL COPLANARITY

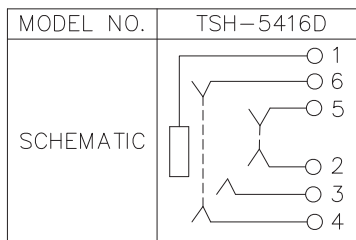
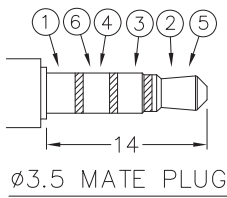


* MATERIAL

- TERMINAL 1 : COPPER ALLOY
- TERMINAL 2 : COPPER ALLOY
- TERMINAL 3 : COPPER ALLOY
- TERMINAL 4 : COPPER ALLOY
- TERMINAL 5 : COPPER ALLOY
- TERMINAL 6 : COPPER ALLOY
- HOUSING : PA6T



RECOMMENDED
SOLDER PAD LAYOUT
(TOP VIEW)



CHAMPWAY 冠泰電子有限公司
CHAMPWAY ELECTRONICS CO., LTD.

DESIGN	T.Y.LI	DATE	26-11-2011	SCALE	4:1
DRAWING	T.Y.LI	DATE	26-11-2011	MATERIAL	*
CHECK		DATE		DWG. NO.	TZ\SH541D-PA6T/A
APPROVAL		DATE		SHEET	

PART NAME	3.5mm SMD STEREO JACK
PART NO.	TSH-541D

TOLERANCE UNLESS	0.0±0.2	UNIT:	mm
OTHERWISE SPECIFIED:	0.00±0.1	0.00±0.05	



F

E

D

C

B

A