

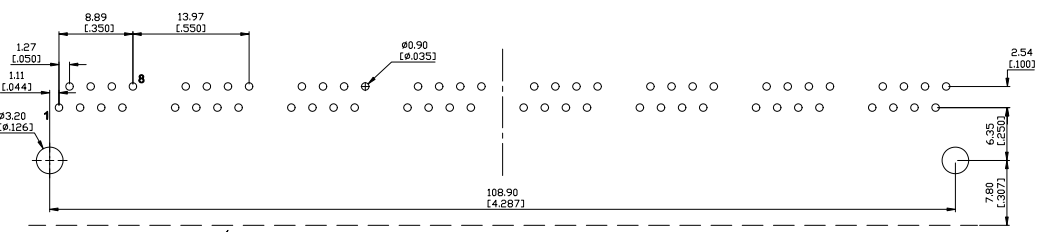
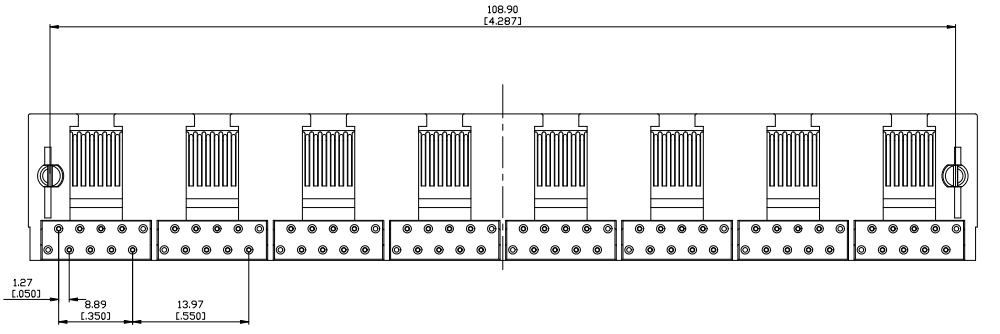
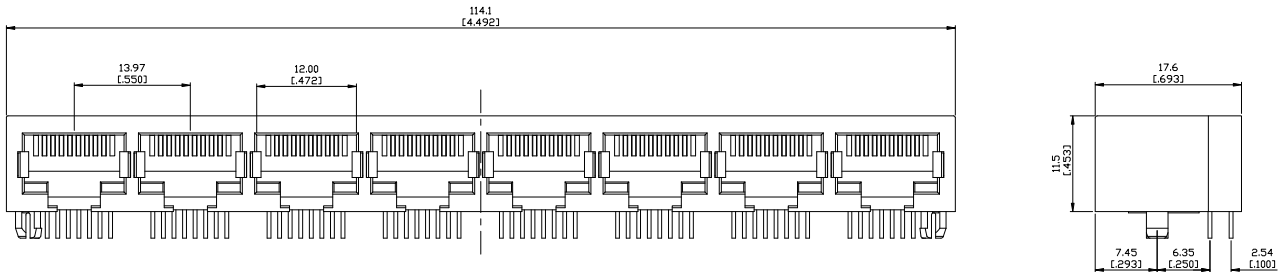
Electrical Characteristics :
Insulation Resistance : 500MΩ Min.
Contact Resistance : 30mΩ Max.
Withstand Voltage : 1000 VAC 1 minute.
Current Rating : 1.5A

Material:
Housing : Thermoplastic UL94V-0
Contact : Full Gold Plating
Spring Wire : Dia 0.45mm Phosphor Bronze
Optional Gold Plating Over Nickel
CUL File No : E215573

PART NO : 8 5 0 8 - B * 8

Positions
 Contacts
 Housing Color
 B : Black

Gold Plated
 0 : Gold Flash
 1 : 6u"
 2 : 15u"
 3 : 30u"
 4 : 50u"



PCB EDGE
**SUGGESTED PCB LAYOUT
 TOP VIEW**

CHAMPWAY 冠泰電子有限公司
 CHAMPWAY ELECTRONICS CO., LTD.

TITLE 圖名	NON-SHIELDED RJ45 SIDE ENTRY PCB JACK		UNIT 單位	mm inch
PART NO. 料號	8508-B*8		SCALE 比例	1:1
REV. 版本	A.1	DATE 日期	2007-08-16	
CHECKED BY 審核	Michael		DRAWN BY 製圖	David

ZONE	REV.	DESCRIPTION	DATE	APPD.	FILE NO : 85 (SERIES)
①	A.1	Withstand Voltage 500修改為1000VAC	2008-08-01	Nick	TOLERANCE (公差) : 0.000 mm ± 0.075 mm 0.00 mm ± 0.15 mm 0.0 mm ± 0.25 mm
②					
③					
④					
⑤					