

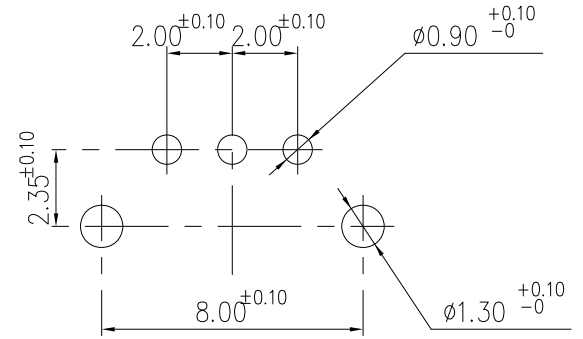
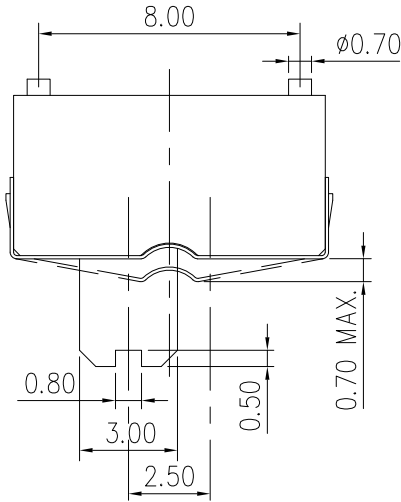
NOTE

- 1. RATING : DC 10V 300mA
- 2. CONTACT RESISTANCE : 50mΩ MAX
- 3. GENERAL TOLERANCE : +/- 0.2 mm
- 4. PART NO.(P/N.):

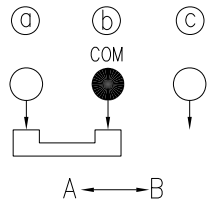
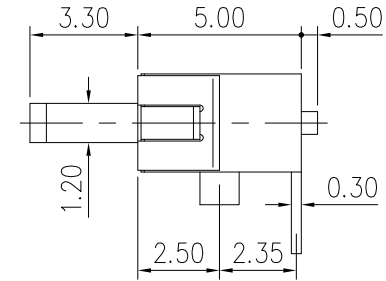
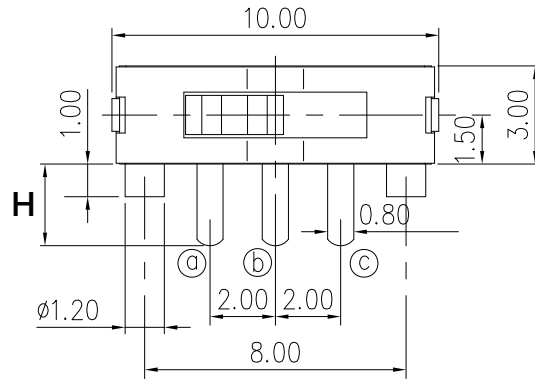
SS1213A H* P - G3.3 - LLQ - R

PACKING
R=REEL

DIMENSION "H"
 H =2.5mm
 H1=1.2mm
 H2=1.0mm
 H3=0.8mm



P.C.B LAND DIMENSION



CIRCUIT DIAGRAM

RevNo	Revision note	Date	Signature

Designed by	L.Y.D		 冠泰電子有限公司 CHAMPWAY ELECTRONICS CO., LTD.					
Checked by								
Approved by		Unit	mm	Scale	1/1	Date	2011.10.14	
Item	SLIDE SWITCH		Tool	A-Cad	Sheet	1/1	Rev.	0
Model	1P2T DIP RIGHT ANGLE		Drawing name		SS1213AH * P-G3.3-LLQ-R			